

# THE FRANKENMAN

LINEAR CUTTING STAPLER PORTFOLIO



 **FRANKENMAN**

**METICULOUSLY DESIGNED, IMPROVED ERGONOMICS AND RELIABLE PERFORMANCE**

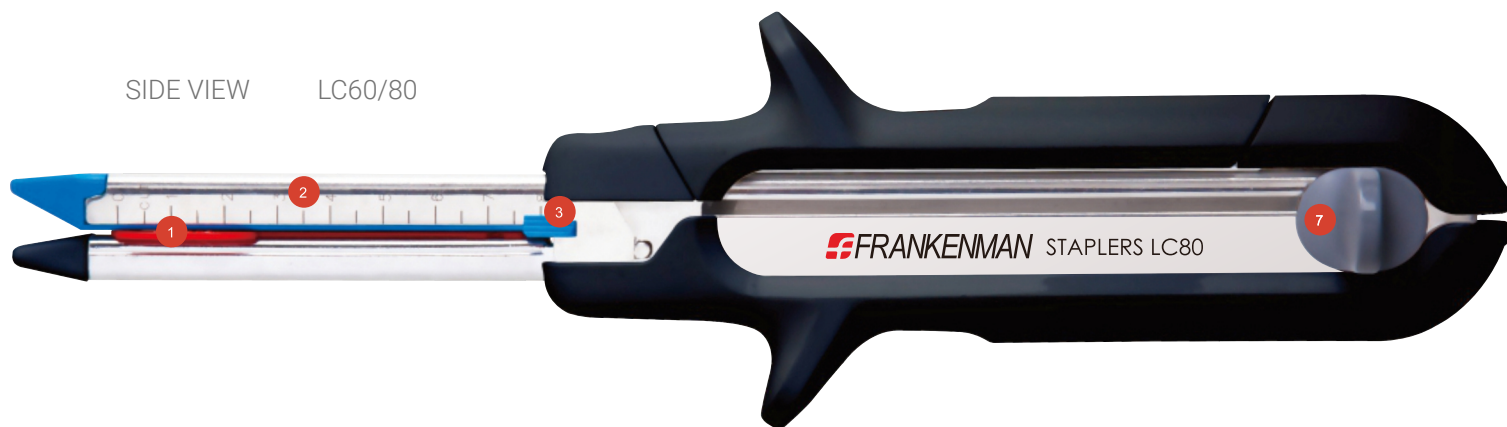


WHEN YOU PUT PATIENTS' HEALTH FIRST,  
**REMARKABLE THINGS HAPPEN**

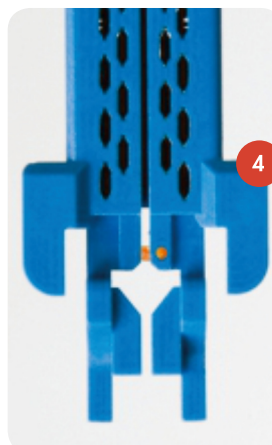
## A RANGE OF PRODUCTS TO MEET THE NEEDS OF MODERN SURGICAL PRACTICE

The range of Linear Cutter Staplers focuses on reliability and functionality. Designed to provide accurate and reliable staple formation and tissue resection... time and time again.

### THE LC RANGE - KEY FEATURES



- 1 TISSUE RETAINING PIN
- 2 CLEAR GRADUATIONS AND INDICATION OF 'CUTTING ZONE' ON BOTH SIDES OF STAPLE HOUSING
- 3 ALL RE-LOADABLE CARTRIDGES HAVE SAFETY LOCK TO PREVENT FIRING OVER EMPTY CARTRIDGE
- 4 UNIQUE 90 DEGREE RELOAD 'SHOULDER TO ACT AS A POSITIVE TISSUE LIMITER TO AVOID CONCERTINA EFFECT OVER RELOAD AND RISK OF PRE-CUT INTERNALLY





5

CARTRIDGE REMOVAL MADE EASIER. INDENTATION TO EXPOSE CARTRIDGE "LEGS" FACILITATES EASY REMOVAL WHEN CARTRIDGE IS WEDGED BY TISSUE OR FLUID BUILD UP



6

MODERN ERGONOMIC DESIGN DEVELOPED WITH INTERNATIONALLY RENOWNED INDUSTRIAL DESIGNERS

7




UNIQUE FIRING SAFETY LOCK TO PREVENT INADVERTENT PRE-FIRING DURING PREPARATION AND POSITIONING

SIDE VIEW LC100



# ORDERING CODES AND SPECIFICATIONS

	PRODUCT CODE	CLOSED STAPLE HEIGHT (mm)	OPEN STAPLE HEIGHT (mm)	STAPLE QUANTITY	STAPLE LINE LENGTH	STAPLE CROWN	STAPLE ROWS	PER BOX
	○ LC60W	1.0	2.5	60	61MM	3.0MM	4	3
	● LC60B	1.5	3.8					
	● LC60G	2.0	4.5					
	● LC80B	1.5	3.8	80	81MM			
	● LC80G	2.0	4.5					
	● LC100B	1.5	3.8	100	101MM			
	● LC100G	2.0	4.5					

	RELOAD CODE	PER BOX
	○ LCR60W	12
	● LCR60B	
	● LCR60G	
	● LCR80B	
	● LCR80G	
	● LCR100B	
	● LCR100G	

## ALSO AVAILABLE FROM FRANKENMAN

STANDARD CIRCULAR STAPLERS



COMPACT CIRCULAR STAPLERS



LINEAR STAPLERS



LINEAR CUTTING STAPLERS



TRANSCUT™ - TRANSVERSE LINEAR CUTTING STAPLERS



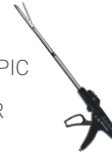
CIRCULAR STAPLERS FOR RECTAL PROLAPSE & ANOPEXY



UNIVERSAL TRANSANAL ACCESS PLATFORM



ENDOSCOPIC LINEAR CUTTER



ACCESSORIES



[frankenman.com/academy](http://frankenman.com/academy)

Frankenman are proud to offer several training courses via the Frankenman Academy, in numerous surgical disciplines, with world renowned expert faculty.

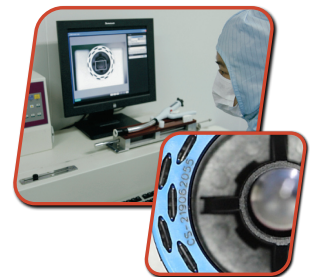
These courses are staged to cover both didactic elements and "hands on" skills workshops.

## QUALITY CONTROL

We pride ourselves on world leading continual quality improvement processes.

ALL stapling devices and reloads have a unique serial number, as well a batch/lot number, to allow for more accurate tracking and traceability.

In addition we test fire 100% of our products (before they are then reloaded and packaged), to verify correct B-Shaped closure.



[www.frankenman.com](http://www.frankenman.com) | [info@frankenman.co.uk](mailto:info@frankenman.co.uk) | +86-512-68786150

Frankenman International Ltd - 108 Jinfeng South Road, High New District, - Suzhou, 215163, P.R. China